



**Omastream**  
embrace your space

# Aluminium Innovations

NZ Trade Distributor  
[www.omastream.com](http://www.omastream.com)



# Aluminium Innovations

Oasis Adjustable Louvre Window

Skylux Self Cleaning Skylight

Solar Lighting System

All Aluminium Carport

Solar Car Park

Green House System

Outdoor Sport Products

Embrace  
your  
space

A large teal circle is centered at the bottom of the page. Inside the circle, the words "Embrace", "your", and "space" are stacked vertically in a white, sans-serif font.



OASIS LOUVRE

Oasis Louvre windows create fresh, natural living spaces that are not only waterproof but also easy to operate, offering designers and homeowners a new level of design flexibility. Louvre windows bring fresh air indoors while seamlessly connecting interior and exterior spaces. Ideal for those who value natural ventilation, openness, and comfort, Oasis Louvre windows combine elegance with privacy.

Our waterproof frame system, featuring built-in drainage for efficient water management, ensures reliable performance in all weather conditions.

The louvres can be opened slightly to allow air circulation while keeping rain out, enhancing both comfort and functionality.

Oasis Louvre stands out as a modern, stylish window option that regulates airflow, enhancing comfort while reducing energy costs. Designed with both aesthetics and durability in mind, the adjustable louvre is crafted from low-maintenance aluminum, stainless steel, and UV-stabilized materials, ensuring long-lasting performance with minimal upkeep.

The engineered plastic blade holder securely holds the glass in place, preventing it from falling or being removed by unwanted intruders, providing both safety and security for your home.



### The Oasis Difference

Oasis is a modern, functional Louvre window that delivers more free airflow into the home than alternative window choices. Designed as a total solution for both home and commercial applications, it provides design flexibility, performance, and security that will change the way designers and consumers view Louvre windows forever.

### Oasis Framing

Our unique 101.6mm (6") frame design incorporates weather seals at the head and sill to restrict water and air from entering the building. A drainage chamber directs excess water outside the window. Oasis is also available with integrated insect and security screens.



### Handle Options

Oasis is available with a standard lever action handle for quick, effortless use, or optionally with a low-profile design perfect for aluminum shutters, bi-fold doors, and entry doors. The handle, made from engineered UV-stabilized POM, is stylish, durable, and strong.

### Oasis Automation

Oasis Louvres can be motorized, making them ideal for hard-to-reach areas or for homeowners looking to integrate window functions into their "Smart Home" systems. Our patented design features a powerful, yet silent motor, discreetly housed within the custom window frame, ensuring smooth and hassle-free control of the louvre.

### Glazing Options

Oasis Louvres are available with 6mm glass or aluminum blades in your choice of 102mm (4") or 152mm (6") widths. The aluminum blades come in a range of popular anodized, powder-coated, and woodgrain finishes.

### Oasis Performance

- 300 pascals Water penetration pass
- 4000 pascals structural wind load
- Cycle tested 26,000 operations
- Salt spray tested for 1000 hours
- 20 year UV exposure



### The Oasis Difference

Oasis is a modern, functional Louvre window that delivers more free airflow into the home than alternative window choices. Designed as a total solution for both home and commercial applications, it provides design flexibility, performance, and security that will change the way designers and consumers view Louvre windows forever.

### Oasis Framing

Our unique 101.6mm (6") frame design incorporates weather seals at the head and sill to restrict water and air from entering the building. A drainage chamber directs excess water outside the window. Oasis is also available with integrated insect and security screens.



### Handle Options

Oasis is available with a standard lever action handle for quick, effortless use, or optionally with a low-profile design perfect for aluminum shutters, bi-fold doors, and entry doors. The handle, made from engineered UV-stabilized POM, is stylish, durable, and strong.

### Oasis Automation

Oasis Louvres can be motorized, making them ideal for hard-to-reach areas or for homeowners looking to integrate window functions into their "Smart Home" systems. Our patented design features a powerful, yet silent motor, discreetly housed within the custom window frame, ensuring smooth and hassle-free control of the louvre.

### Glazing Options

Oasis Louvres are available with 6mm glass or aluminum blades in your choice of 102mm (4") or 152mm (6") widths. The aluminum blades come in a range of popular anodized, powder-coated, and woodgrain finishes.

### Oasis Performance

- 300 pascals Water penetration pass
- 4000 pascals structural wind load
- Cycle tested 26,000 operations
- Salt spray tested for 1000 hours
- 20 year UV exposure



**Omastream**  
embrace your space



 **OASIS LOUVRE**

**NZ Trade Distributor**  
[www.omastream.com](http://www.omastream.com)



## Self Cleaning Skylight

**skylux** is the ultimate solution for keeping skylights clean of dust and air-borne pollution. Our innovative patented self-cleaning skylight incorporates a motorised cleaning rail that cleans the skylight on demand. Skylux is operated by remote control, smartphone application or programable control panel.



### Cleaning blades

Skylux is an industry first skylight that incorporates automated cleaning. The skylight has a motorised cleaning fitted with specially designed EPDM cleaning wiper blades. When operated a cleaning fluid is first applied to the class, then the cleaning rail with and cleaning wiper blades move effortlessly along the length of the skylight removing dust and debris from the glass surface. Excess cleaning fluid and dirt is pushed off the glass into a drainage chamber at the top and bottom of the skylight.

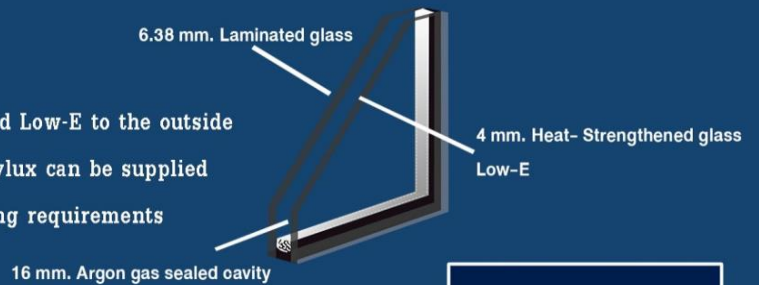




**Insulated glass** Skylux can be installed with most popular glass combinations and thicknesses, including single and double glazed options. Our standard insulated glass option is argon gas filled which reduces the amount of heat transmitted through the skylight along with reducing harmful UV rays up to 90%.

“Performance will change depending on location and glass types”.

Our standard 26mm Insulated glass unit uses 6mm heat strengthened Low-E to the outside and 6.38mm laminated safety glass to the inside of the building. Skylux can be supplied with custom glass selection to comply with individual country glazing requirements and variations in skylight size.



**Application** Skylux customised operating system is convenient to use and compatible with both iPhone and Android smartphones. Connectivity to your skylight via stable and secure Wi-Fi emitted by skylux so there is no need for home Wi-Fi. The cleaning on demand system is operated by remote control or smart phone application, when cleaning is needed just one push of the button is all that is required. Skylux is also available with an optional programable control panel where cleaning times can be scheduled in advance. The system provides cleaning cycle tracking and low-level warning of cleaning fluid via your smartphone screen.



Skylux is constructed using automotive grade highly engineered materials. The frame is made from low maintenance powder coated Aluminum alloy that is available in a range of popular colours. The drive train is powered by a digitally controlled stepping motor made in Japan, in general, all Skylux components are made from Aluminum and Stainless steel and UPVC. Materials ensuring many years to trouble free operation and minimal maintenance.



**Skylux Smart Cleaning control box** is installed in convenient a waterproof location either inside or outside of the building. The controller works via the touch screen or smart phone application. Cleaning times in advance for up to 99 days or press the cleaning button as needed. The screen contains essential information such as the temperature inside and outside the building. Reminder symbol to add cleaning solution Date and time Cleaning Cycle: The glass cleaner tank stores enough cleaning fluid for approximately 20 cleaning cycles. When cleaning fluid is low a warning symbol to refill the cleaning solution appears. “Custom operating systems available for commercial projects”



Retro Styled Aluminium Carport.  
Ideal for home, office and industrial installations.

This innovative stylish design is perfect for coastal installations due to the aluminium construction And corrosive resistant finishing.

Supplied, prefabricated single and double configurations.

Standard Front Height 3.2m  
Standard Rear Height 2.3m

Available with optional Solar Powder LED lighting

Made from Aluminium 6061-T6 & 6063-T5 alloy.  
Available in durable anodised, powder coat and wood grain finishes.





Power Generating Solar Car Park

**Solar Power Generating Roof Structure**

Our innovative Solar Carport system transforms car parks into renewable energy sources, incorporating solar panels directly into the parking space design. This sustainable solution can be configured for both on-grid and off-grid systems, providing power for lighting, electric vehicle charging, and more.

Unlike traditional solar panels that are mounted onto roofs, solar carports integrate the panels as part of the roof structure itself. The sleek, modern industrial design offers not only a waterproof parking space but also an aesthetically pleasing option suitable for homes, offices, shopping centres, and public spaces.

Available popular durable anodised finishes



**SHINKOLITE acrylic panels by SCG**

**HEAT CUT SERIES**

Heat cut series reduces heat under the roof by about 5 degrees Celsius. In addition, it helps reduce heat from infrared rays by 48-59%, providing a comfortable clear open environment.

**SUPERIOR SERIES**

Clear panel allowing natural light to transmit with clarity, with superior resistance sun and rain.

**SHADE SERIES**

Shade panels stay cool, are aesthetically pleasing and durable in weather conditions, UV tested.

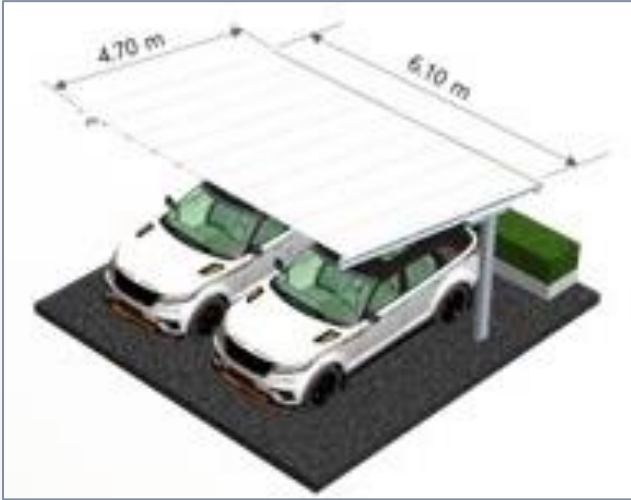
**SPECIFICATIONS:**

Roof Structure: 6005-T5 Aluminium Alloy  
Support Posts: 6005-T5 Aluminium Alloy  
Gutters & Downpipes: 304 grade Stainless Steel

Optional LED lighting and charging equipment supplier by others

## Solar Carport System

### T CLASS SHINKOLITE SHADE SERIES



2 car parking SHINKOLITE acrylic roof  
 Dimensions 6.10m wide x 4.70m deep.  
 Inside pole dimensions 5.50 m.  
 Total area is 28.67 square meters.

### T CLASS 10 PANEL SOLAR ROOF



2 car parking 10 panel solar roof  
 Dimensions 5.85m wide x 4.70m deep  
 Inside pole dimensions 5.50m.  
 Solar panel size 1,134 x 2,261 x 35 mm.  
 Size 550 Wp/panel.  
 10 panels = 5.50 kWp.

### T CLASS SOLAR ROOF + SHINKOLITE



2 car parking 10 panel solar + SHINKOLITE  
 Dimensions 6.64m wide x 4.70m deep  
 Inside pole dimensions 5.50m.  
 Solar panel size 1,134 x 2,261 x 35 mm.  
 Size 550 Wp/panel.  
 10 panels = 5.5 kWp.

### T CLASS 12 PANEL SOLAR ROOF



2 car parking 12 panel solar roof  
 Dimensions 7.00m wide x 4.70m deep  
 Inside pole dimensions 5.70m.  
 Solar panel size 1,134 x 2,261 x 35 mm.  
 Size 550 Wp/panel.  
 12 panels = 6.60 kWp.

### Multi Function Light Pole

SOLAR +CCTV/SECURITY + BANNER

- **STRUCTURE**

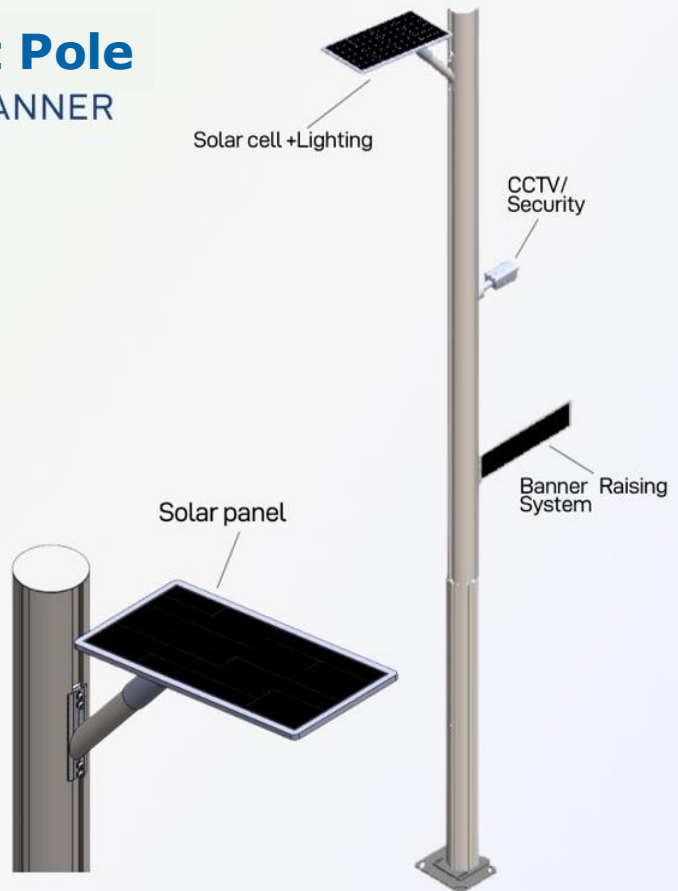
Series 6000 structural aluminium.

- **Anodize Colour**



- **Detail**

OD	190.50 mm.
Cladding	200.00 mm.
Available heights	6.00 m.
Weight	80.00 kg.
Finish options	Anodized
Suitability	Highways, Major+Local Roads, Pedestrian Precincts, Car Parks and Sports Grounds.



#### OPTION #1

- **Banner Raising System**

Banner Raising System are suitable for many locations including pedestrian precincts, footpaths, tourist attractions, civic centres, roadways and estates.

Banner Maximum Size : width 0.2 m. X Length 0.6 m. X Thickness 0.02 m.

#### OPTION #2

- **CCTV/Security**

For seamless CCTV operation, a range of CCTV support arms are available for enabling cameras to be located at any position on the poles.



## Aluminium Green House



### Prefabricated Aluminium Green House

Our Aluminium Green House is designed as a kit form system requiring just a few basic tools for assembly. The interlocking walls and trusses are strong and durable and easily assembled. This versatile greenhouse system can be fitted out using PVC sheets, shading cloth, or louvre windows. Incorporating ventilation and climate control systems gives you the perfect combination to grow a variety of produce.

### Single Bay Design

4m x 5m x 3m

Suitable for small to medium scale agriculture.

Multi Span and bespoke designs available.

### Evaporation Unit

9x26m Including temperature and humidity control



## Outdoor Sports Products

